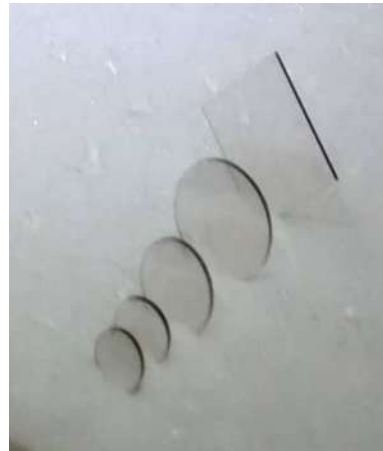


CVD Diamond Products

Produced by **indigenously developed technology**, we supply a complete range of CVD Diamond Products in the form of mono, poly and nano-crystalline and in various sizes and shapes for a wide range of engineering applications such as in cutting tools for ultra high precision, thermal management (as heat spreader, IC, Laser Diode and Array, etc.), optical windows (for high power CO₂ Laser, microwave devices, etc.), etc. Customized solutions, suiting to specific applications, for CVD Diamond Products are also available. Our competitive strength is high quality with cost efficiency.



Type: Mono/Single, Poly, Nano-Crystalline

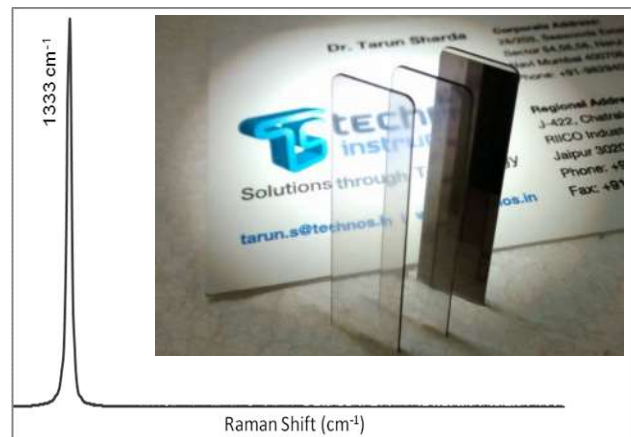
Size: 2x2 to 7x7mm (Single), Ø63.5mm (Poly)

Surface: As-grown, Polished (Ra < 5nm, Flatness < 1 fringes @ 633nm)

Shape: Parallel to Wedge

Grade: Detector, Electronic, Optical, Thermal and Mechanical

Thermal Conductivity: 1000-2000 W/m.K



CO₂ Laser Exit Window